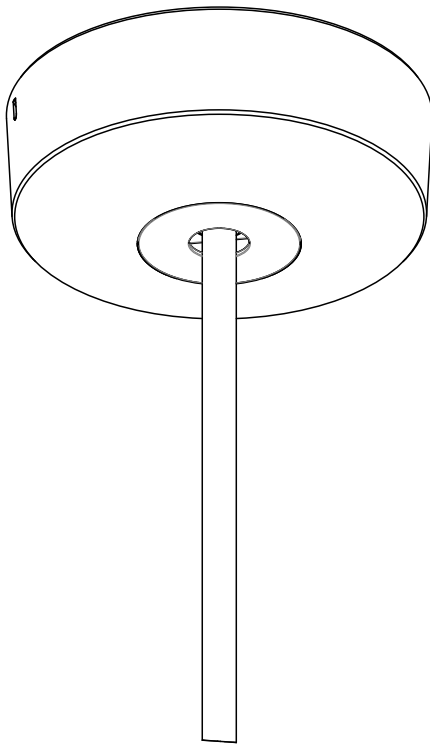




# Deep Canopy

13517 rB

Stem Mount



## CAUTION:

Before starting, turn off power at main circuit panel.

## ADVERTENCIA:

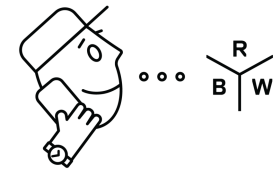
Antes de comenzar la instalación, apague la corriente en el tablero principal.

## ATTENTION:

Coupez l'alimentation avant de procéder à l'installation.



Calling for backup? Scan above to contact our team.

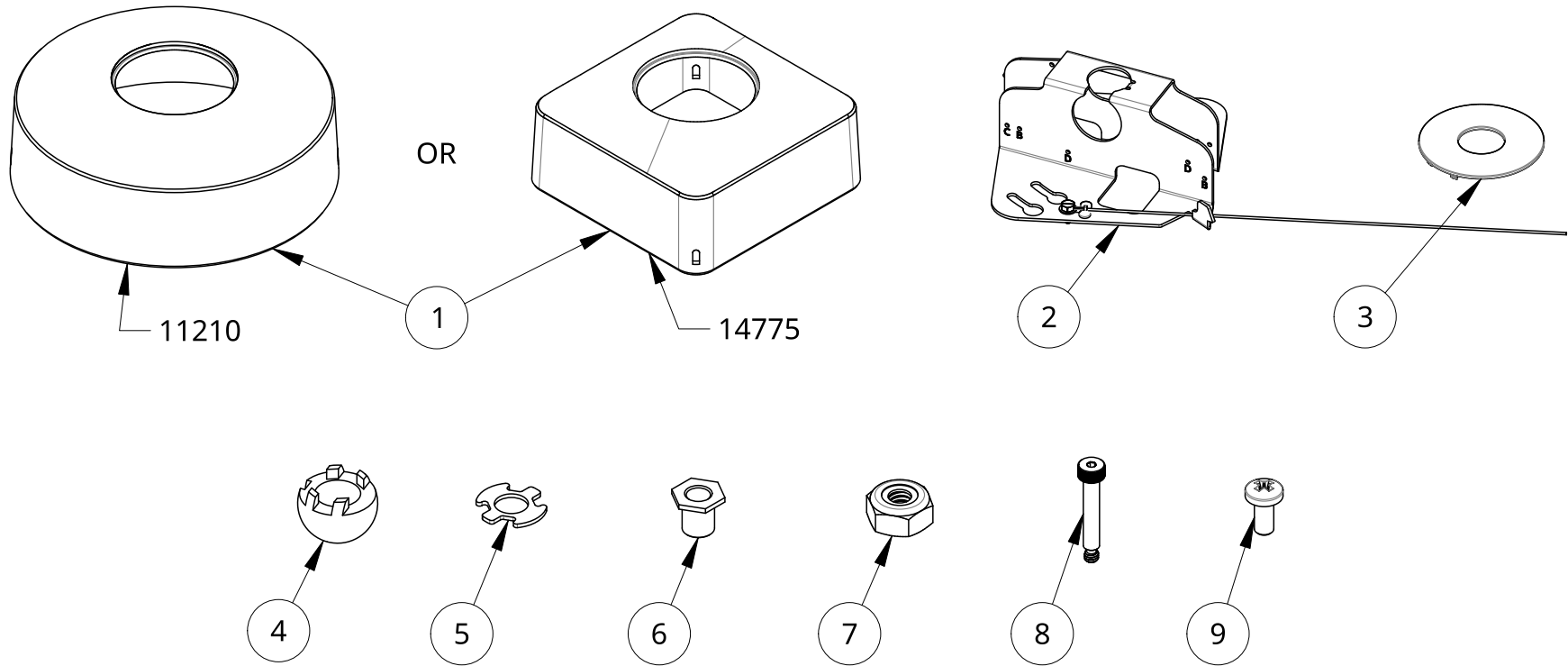


[www.RBW.com](http://www.RBW.com)

+1 212 388 0399

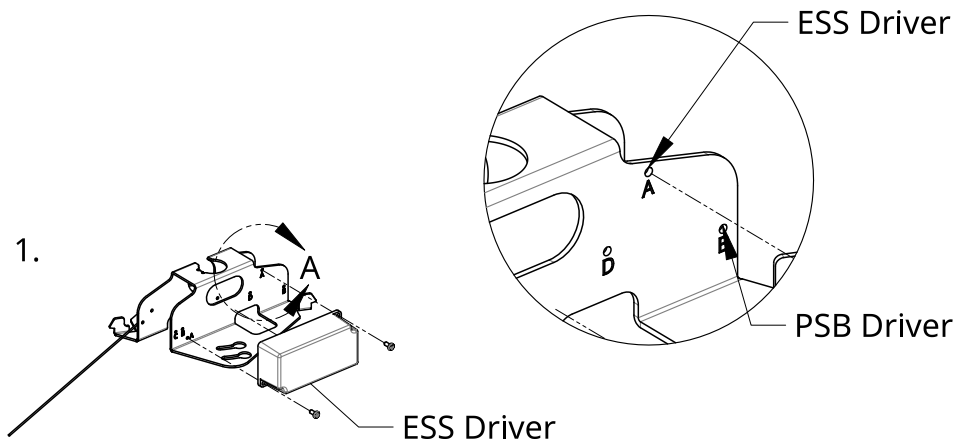
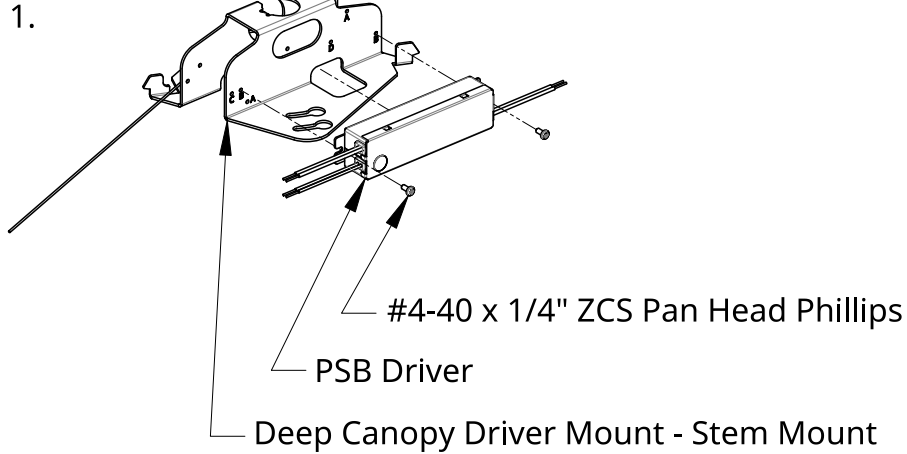
[support@RBW.com](mailto:support@RBW.com)

© RBW Studio LLC, 2013, 2020



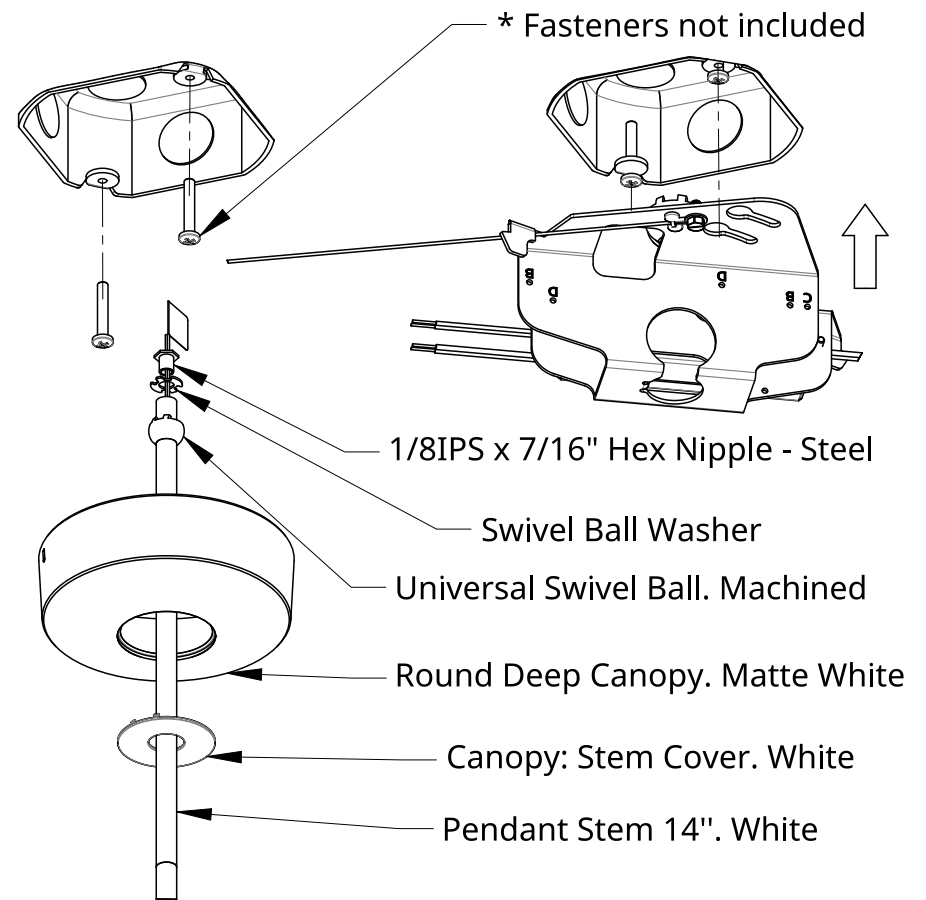
Item	Qty	Part number	Description
1	1	11210	Round Deep Canopy. Matte White
2	1	14233	Assembly: Deep Canopy. Stem Mount
3	1	12674	Canopy: Stem Cover. White
4	1	14905	Universal Swivel Ball. Machined
5	1	14923	Swivel Ball Washer
6	1	NIH902	1/8IPS x 7/16" Hex Nipple - Steel
7	1	90633A009	8-32 Thin Nylock Hex Nut
8	1	91259A168	8-32 x 1" Shoulder Screw
9	4	90272A106	#4-40 x 1/4" ZCS Pan Head Phillips

\* If provided driver does not fit in canopy, it must be installed in an external location



### Installation - Driver

1. Fasten included driver to corresponding hole pattern in Driver Mount with #4-40 x 1/4" Pan Head Screws.



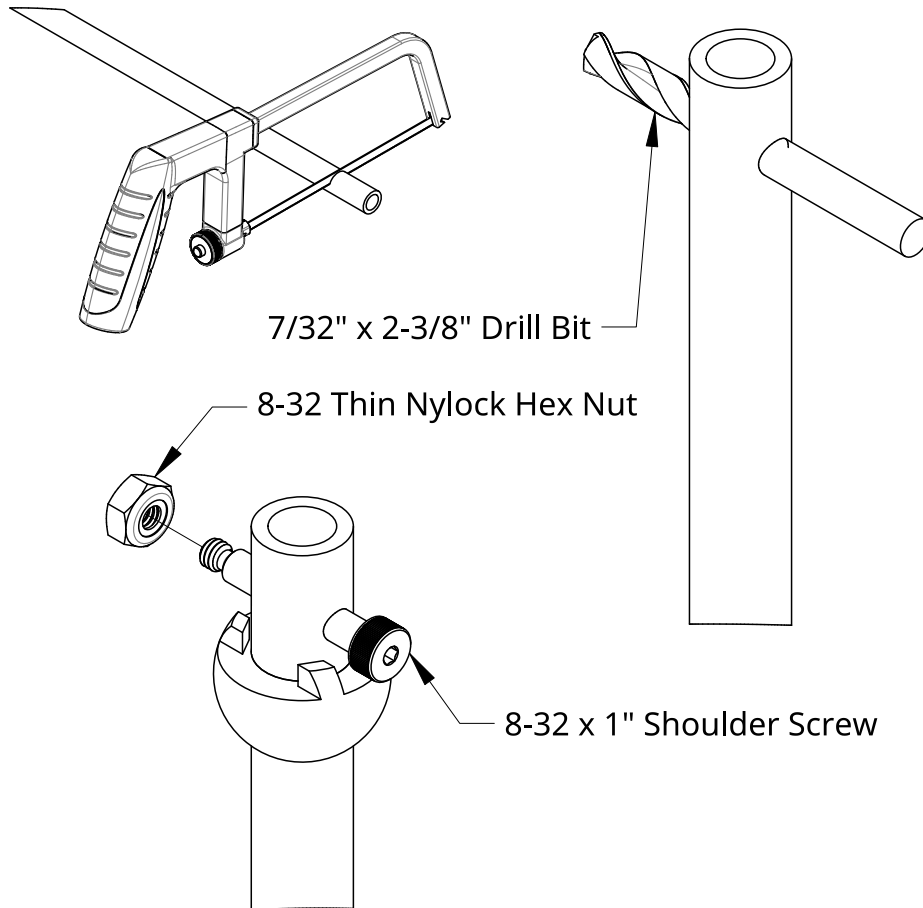
\* For adjustable stem steps, refer to Page 4

### Installation - Driver Mount

2. Attach appropriate fasteners to desired mounting location leaving enough clearance to secure Driver Mount.
3. Raise Dirver Mount until flush with ceiling and rotate to secure in place.
4. Tighten Fasteners to fully secure Driver Mount.
5. Pass Wires and Pendant Stem through Stem Cover, Deep Canopy and Universal Swivel Ball.
6. Pass Wires through Swivel Ball Washer and 1/8IPS Hex Nipple.
7. Fasten Hex Nipple to Stem to secure Swivel Ball Washer.

\* Optional: IF adjusting drop height is desired  
For default instructions refer to page 5.

Remove wires from Stem before cutting.

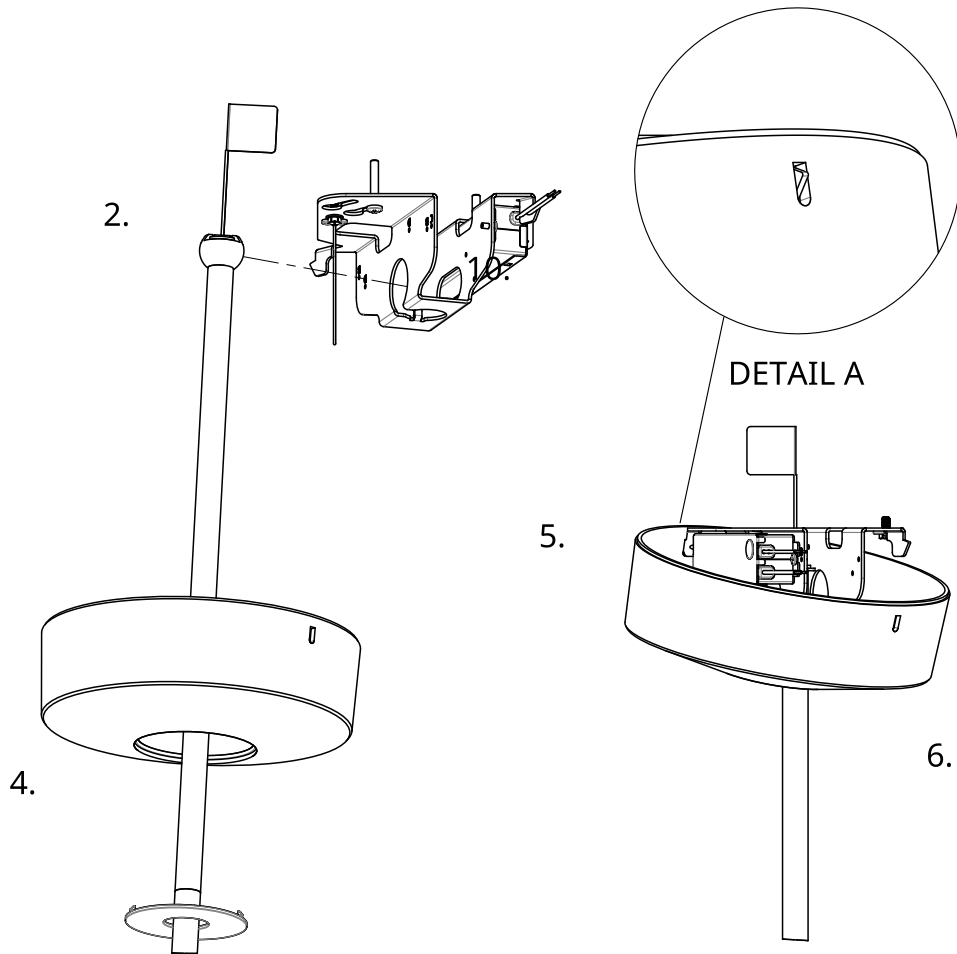


Page intentionally left blank

### Installation - Stem Trimming

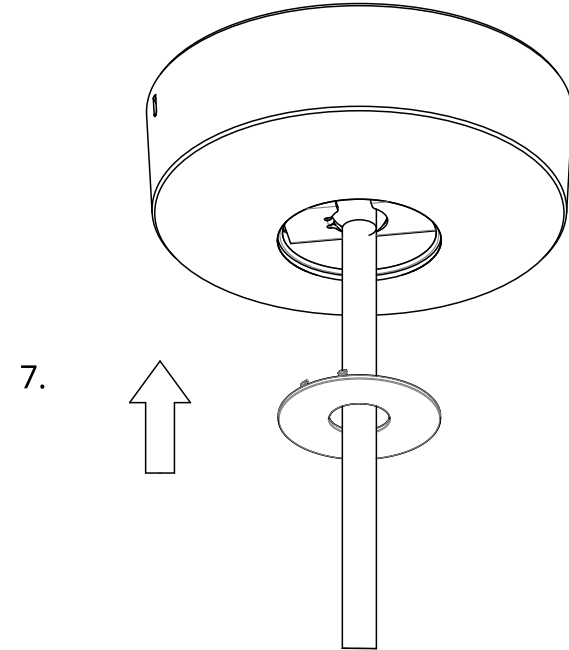
1. Cut Stem to desired length with an appropriate tool and deburr inside edge.
2. Use included Drill Bit to drill through Stem at least .5 in from the cut edge and deburr hole.
3. Insert Shoulder Screw through drilled holes.
4. Fasten Hex Nut to end of Shoulder Screw.
5. To complete installation continue to page 5 steps.

\* Step 2 requires 2 people



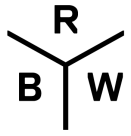
### Installation - Driver Mount

1. Connect mains voltage to Driver.
2. Raise product to Driver Mount and pass Swivel Ball through Driver Mount hole, let product hang in the center of the Driver Mount.
3. Feed wires through hole in Driver Mount and connect Red (+) and Black (-) Wires to corresponding driver leads.
4. Raise Round Canopy Cover to the Driver mount and locate the back facing slot in Canopy Cover.



### Installation - Canopy Cover & Stem Cover

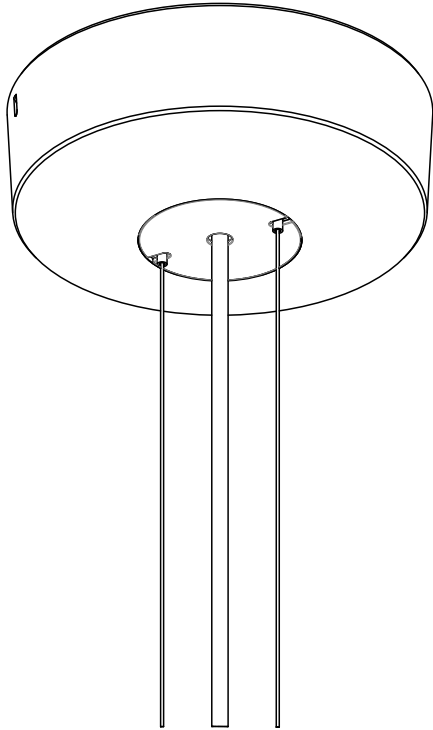
5. Insert back facing tab from Driver Mount into Canopy Cover slot.
6. Locate front facing slot in Canopy Cover, raise it to corresponding Driver Mount tab and snap in place.
7. Raise Stem Cover to Canopy Cover and snap in place.
8. Congratulations! End of guide.



# Deep Canopy

13515 rB

Twin Cable Suspension



## CAUTION:

Before starting, turn off power at main circuit panel.

## ADVERTENCIA:

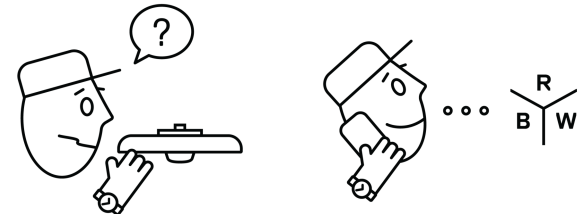
Antes de comenzar la instalación, apague la corriente en el tablero principal.

## ATTENTION:

Coupez l'alimentation avant de procéder à l'installation.



Calling for backup? Scan above to contact our team.

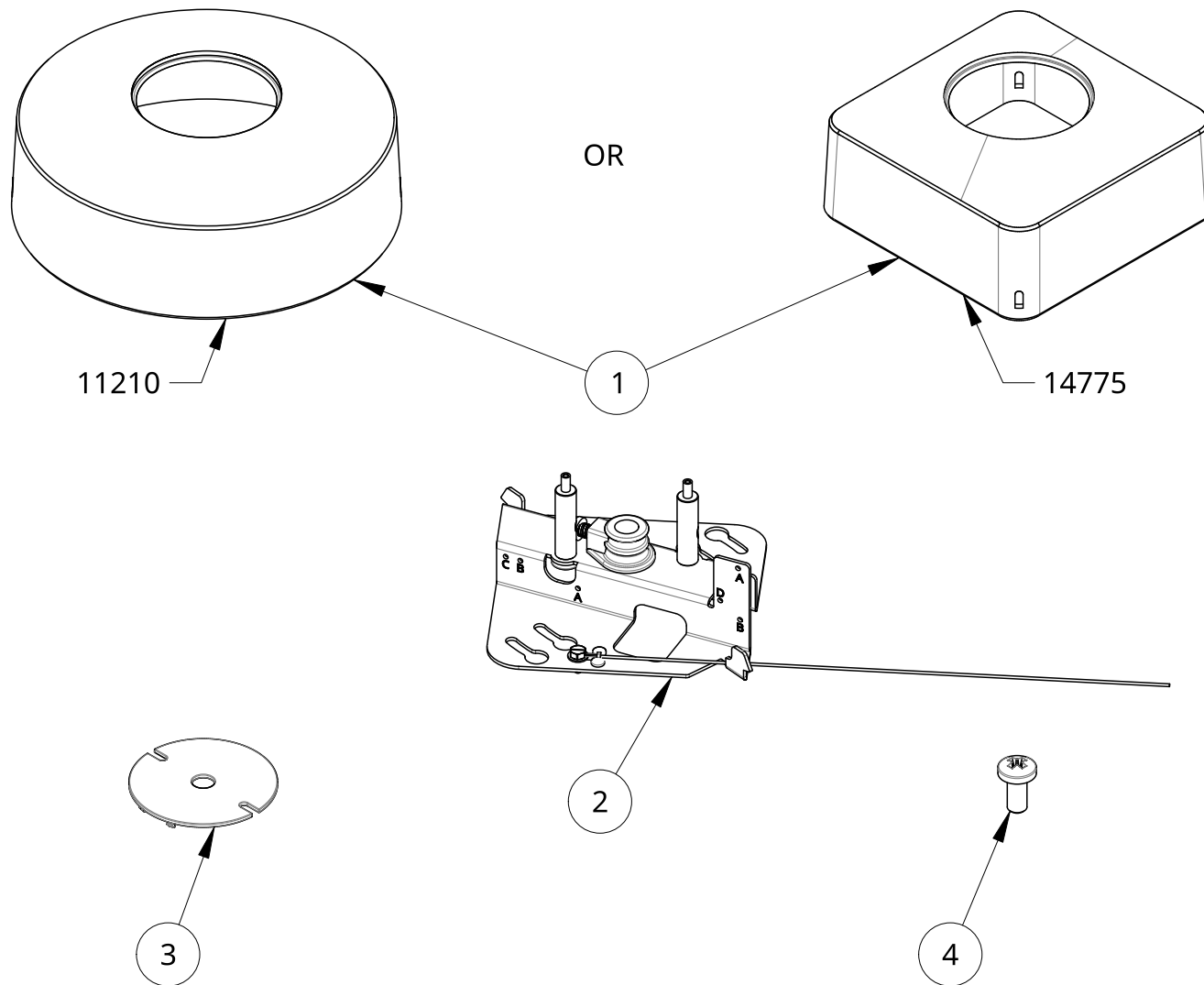


[www.RBW.com](http://www.RBW.com)

+1 212 388 0399

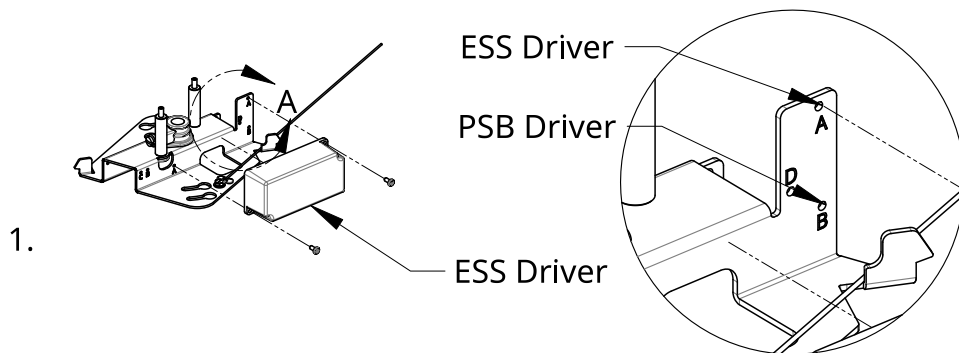
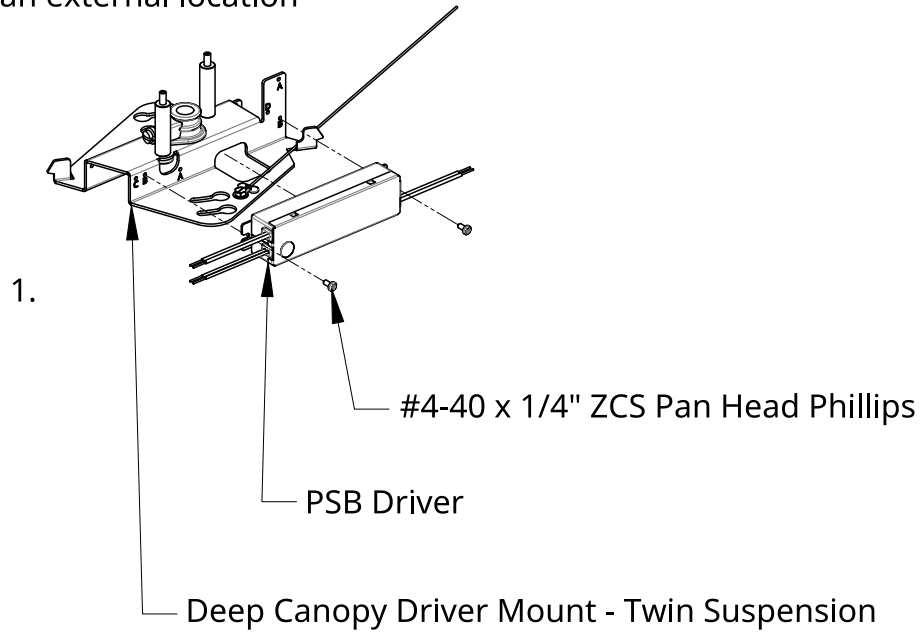
[support@RBW.com](mailto:support@RBW.com)

© RBW Studio LLC, 2013, 2020



Item	Qty	Part number	Description
1	1	11210	Round Deep Canopy. Matte White
2	1	14231	Assembly: Deep Canopy. Twin Cable Suspension
3	1	12672	Canopy: Twin Cable Cover. White
4	4	90272A106	#4-40 x 1/4" ZCS Pan Head Phillips

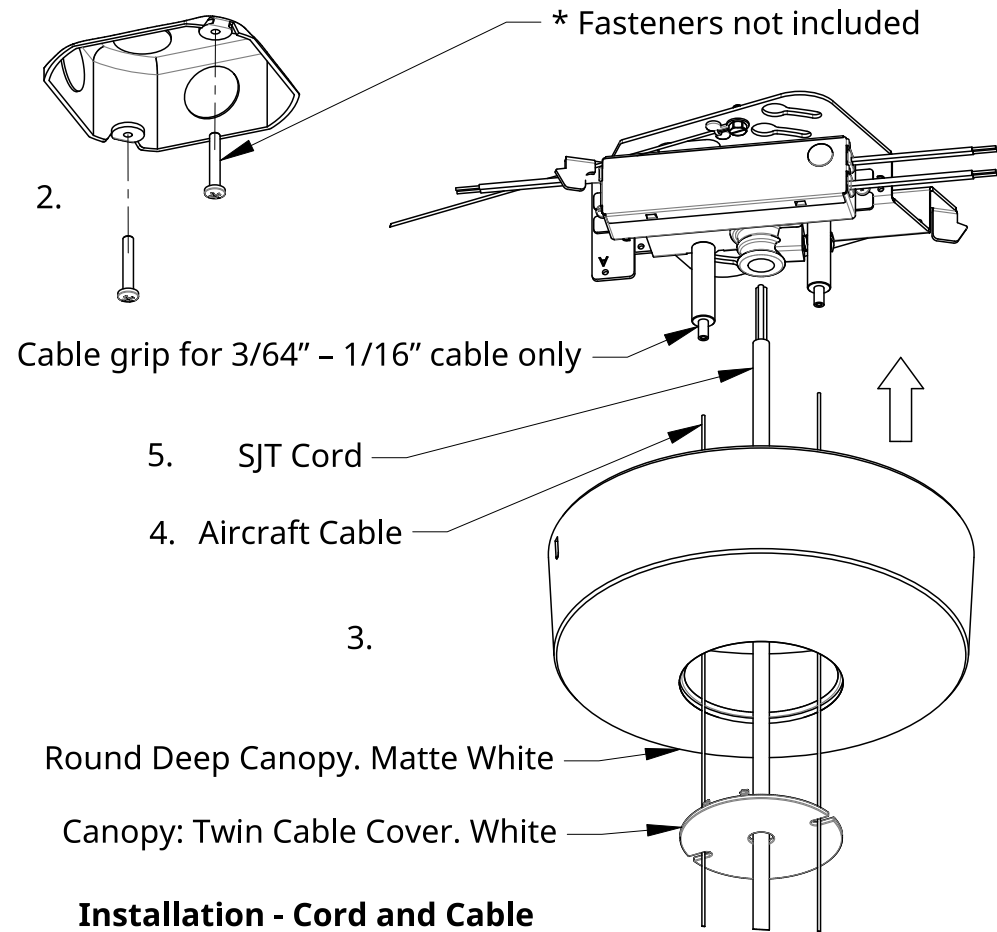
\* If provided driver does not fit in canopy, it must be installed in an external location



### Installation - Driver

1. Fasten included driver to corresponding hole pattern in Driver Mount with #4-40 x 1/4" Pan Head Screws.

\* Measure approximate hang height, add 3 inches and trim cable and power feed before step 6.

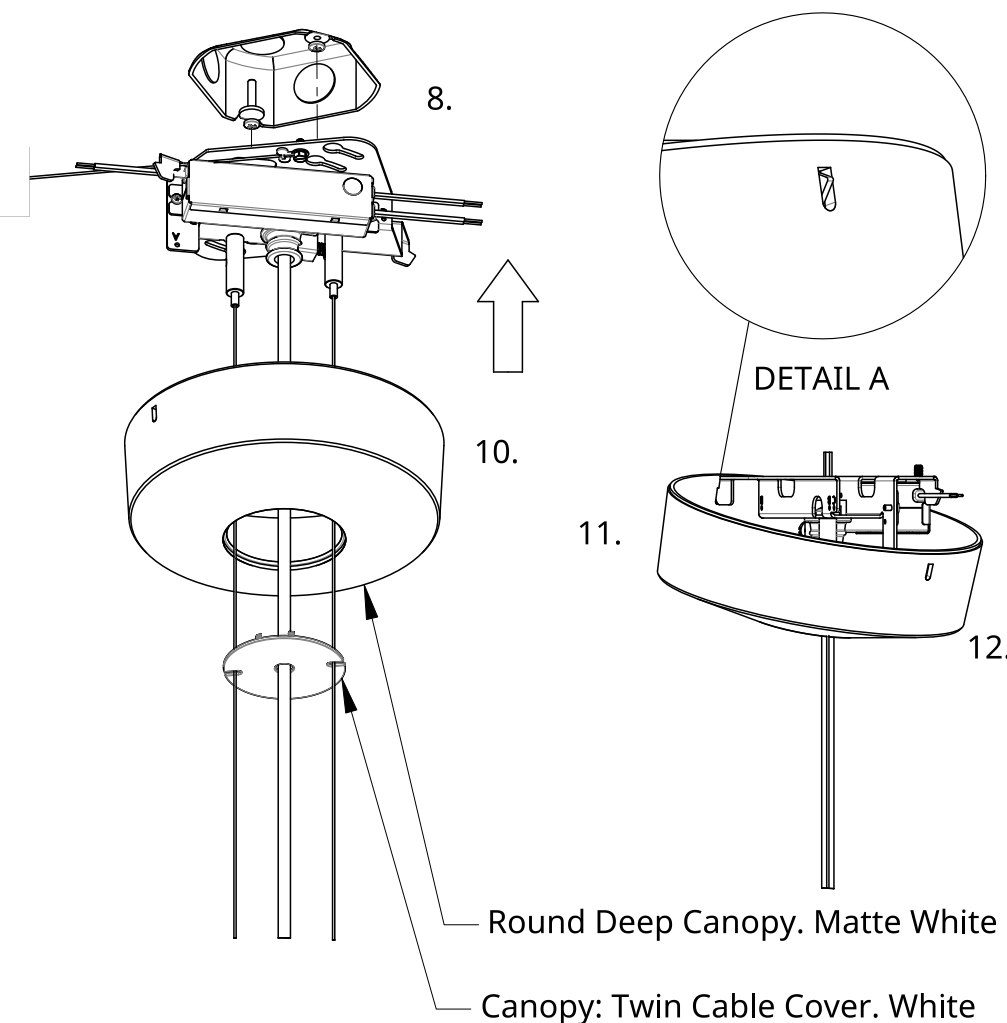


### Installation - Cord and Cable

2. Attach appropriate fasteners to desired mounting location leaving enough clearance to secure Driver Mount.
3. Pass product Power Feed and Aircraft Cables through Twin Cable Cover and Round Deep Canopy.
4. Feed Aircraft Cables through Cable Grips and adjust to desired length.
5. Insert Power Cord into Heyco Cable Clamp and tighten Cable Clamp at desired length.

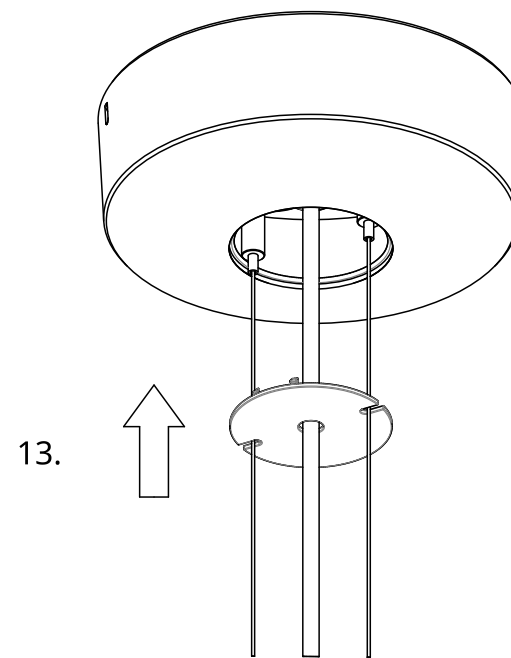


\* Driver Mount installation requires 2 people



### Installation - Driver Mount

6. Connect Power Feed leads to respective Driver leads and tuck wires into the center of the Driver Mount.
7. Connect mains voltage to Driver.
8. Raise Driver Mount with hanging product to mounting fasteners and rotate.
9. Tighten Fasteners fully to secure Driver Mount to ceiling mounting surface.



### Installation - Canopy Cover & Single Cable Cover

10. Raise Round Deep Canopy to the Driver mount and locate the back facing slot in Deep Canopy.
11. Insert back facing tab from Driver Mount into Deep Canopy slot.
12. Locate front facing slot in Deep Canopy, raise it to corresponding Driver Mount tab and snap in place.
13. Raise Single Cable Cover to Canopy Cover and snap in place.
14. Congratulations! End of guide.